

**Anti-HTRA2 Antibody**  
**Mouse Monoclonal Antibody**  
**Catalog # AP53418****Specification**

---

**Anti-HTRA2 Antibody - Product Information**

Application	WB, IP
Primary Accession	<a href="#">O43464</a>
Reactivity	Human
Host	Mouse
Clonality	Monoclonal
Isotype	IgG1
Immunogen	Recombinant human HtrA2/Omi protein.
Purification	Affinity purified

**Anti-HTRA2 Antibody - Additional Information****Gene ID** 27429**Other Names**

High temperature requirement protein A2;HTRA 2;HtrA like serine protease;HtrA serine peptidase 2;HtrA, E. coli, homolog of, 2;HtrA2;HTRA2\_HUMAN;mitochondrial;Omi stress regulated endoprotease;Omi stress-regulated endoprotease;PARK 13;PARK13;Protease serin

**Dilution**

WB~~1:500

IP~~N/A

**Format**

Purified mouse monoclonal antibody in PBS(pH 7.4) containing with 0.09% (W/V) sodium azide and 50% glycerol.

**Storage**

Store at -20 °C.Stable for 12 months from date of receipt

**Anti-HTRA2 Antibody - Protein Information****Name** HTRA2**Synonyms** OMI, PRSS25**Function**

[Isoform 1]: Serine protease that shows proteolytic activity against a non-specific substrate beta-casein (PubMed:<a href="http://www.uniprot.org/citations/10873535" target="\_blank">10873535</a>). Promotes apoptosis by either relieving the inhibition of BIRC proteins on caspases, leading to an increase in caspase activity; or by a BIRC inhibition-independent, caspase-independent and serine protease activity-dependent mechanism (PubMed:<a href="http://www.uniprot.org/citations/15200957" target="\_blank">15200957</a>).

Cleaves BIRC6 and relieves its inhibition on CASP3, CASP7 and CASP9, but it is also prone to inhibition by BIRC6 (PubMed: [36758104](http://www.uniprot.org/citations/36758104) target="\_blank">36758104</a>, PubMed: [36758105](http://www.uniprot.org/citations/36758105) target="\_blank">36758105</a>). Cleaves THAP5 and promotes its degradation during apoptosis (PubMed: [19502560](http://www.uniprot.org/citations/19502560) target="\_blank">19502560</a>).

#### Cellular Location

Mitochondrion intermembrane space. Mitochondrion membrane; Single-pass membrane protein  
Note=Predominantly present in the intermembrane space. Released into the cytosol following apoptotic stimuli, such as UV treatment, and stimulation of mitochondria with caspase-8 truncated BID/tBID

#### Tissue Location

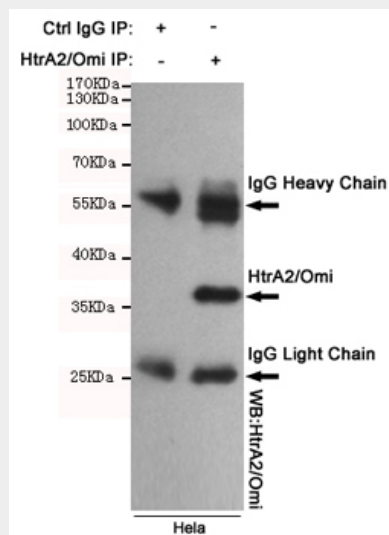
[Isoform 1]: Ubiquitously expressed.

### Anti-HTRA2 Antibody - Protocols

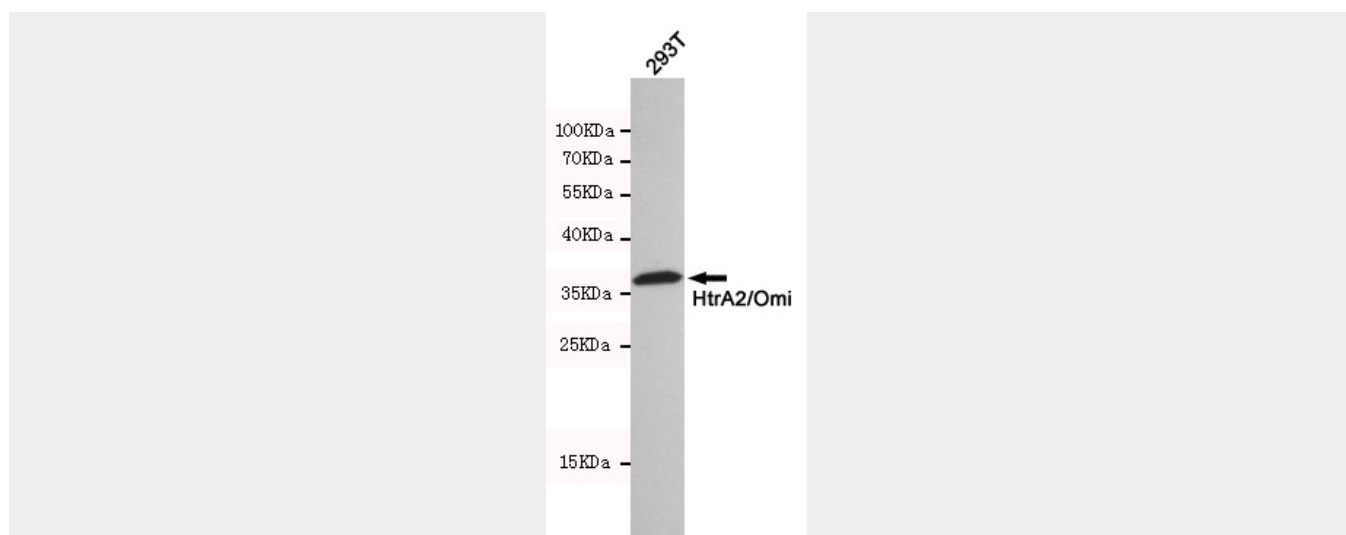
Provided below are standard protocols that you may find useful for product applications.

- [Western Blot](#)
- [Blocking Peptides](#)
- [Dot Blot](#)
- [Immunohistochemistry](#)
- [Immunofluorescence](#)
- [Immunoprecipitation](#)
- [Flow Cytometry](#)
- [Cell Culture](#)

### Anti-HTRA2 Antibody - Images



Immunoprecipitation analysis of HeLa cell lysates using HtrA2/Omi mouse mAb.



Western blot detection of HtrA2/Omi in 293T cell lysates using HtrA2/Omi mouse mAb(dilution 1:500).Predicted band size:49kDa.Observed band size:36kDa.

#### **Anti-HTRA2 Antibody - Background**

Serine protease that shows proteolytic activity against a non-specific substrate beta-casein. Promotes or induces cell death either by direct binding to and inhibition of BIRC proteins (also called inhibitor of apoptosis proteins, IAPs), leading to an inc